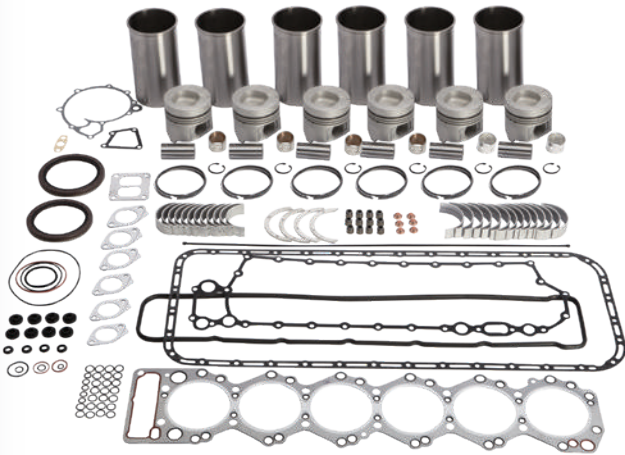


Q3 REAL DEALS

JUL
AUG
SEP
2018



6 cylinder rebuild kit shown.

ENGINE REBUILD KITS

An economical way to give a worn engine a new lease of life. Kit includes piston / liner sets, engine gasket set, main bearings, big end bearings and crankshaft thrust washers.

N SERIES 4HK1
FROM **\$2,525.00**

See inside for all applications and individual kit pricing.

BVP SHOCK ABSORBERS

Maximise safety and handling. Ensures optimum shock absorption for a more comfortable ride.

FROM **\$32.00**



BULLBARS

The only Bullbar approved by Isuzu Australia. ADR compliant and crash tested in the Isuzu Japan factory to ensure correct airbag deployment in the event of an accident. Modern design with a corrosion resistant polished alloy finish which complements the look of the truck.

NN*/NP*/NQ* WITHOUT FOGLEAMPS
FROM **\$2,999.00**

See inside for all applications and individual model pricing.



parts.isuzu.com.au

REAL DEALS ON GENUINE PARTS INSIDE ►

ISUZU

GENUINE PARTS

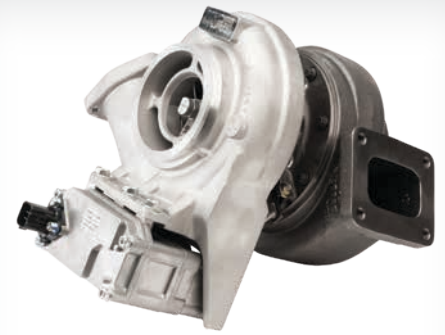
GENUINE VALUE ON GENUINE PARTS.

TURBO CHARGERS

FROM **\$1,990.00**

Ensure your engine is operating at peak performance with a new genuine turbo.

NLR / NLS / NNR 4JJ1 Euro 4 10/07 - 08/10	\$1,990.00
NLR / NLS / NNR 4JJ1 Euro 5 09/10 - current	\$2,370.00
NPR / NPS / NQR 4HK1 10/07 - 05/16, FSS 10/07 - 05/16, FRR 4HK1 10/07 - 05/16	\$2,075.00
FRR / FSR / FT* / FV* / GV* 6HK1 10/07 - 10/15	\$3,100.00
FX* / GX* 6UZ1 Euro 4 01/08 - 08/10	\$4,300.00
FX* / GX* Euro 5 09/10 - current, FY* 12/12 - current	\$3,900.00



WHEEL CYLINDERS

FROM **\$110.00**

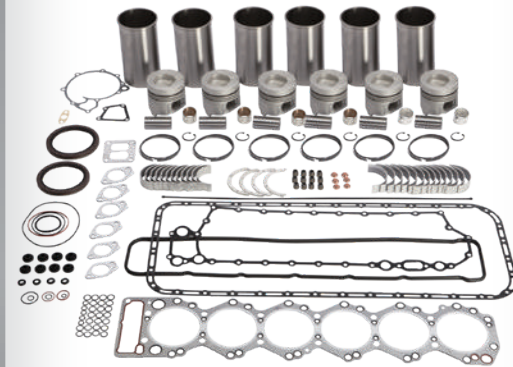
NKR / NLR	FROM \$110.00
NNR	FROM \$155.00
NPR / NQR	FROM \$199.00
FRR	FROM \$119.00
FSR	FROM \$149.00
FSS / FTS	FROM \$299.00
FTR	FROM \$599.00

ENGINE REBUILD KITS

FROM **\$2,525.00**

An economical way to give a worn engine a new lease of life. Kit includes piston / liner sets, main bearings, big end bearings, crankshaft thrust washers and engine gasket set.

N Series 4HK1 SITEC 1 Euro 3 150 / 175hp 05/07 - 09/07	\$2,675.00
N Series 4HK1 SITEC 2 Euro 4 155 / 185hp 10/07 - 10/10	\$2,640.00
F Series 4HK1 SITEC 2 Euro 4 205hp 10/07 - 10/10	\$2,680.00
N series 4HK1 - TCN / 4HK1 - TCS SITEC 3 Euro 5 11/10 - 05/15	\$2,525.00
F Series 4HK1 - TCS SITEC 3 Euro 5 11/10 - 12/15	\$2,550.00
F Series 6HK1 - TCS SITEC 1 Euro 3 255hp 07/03 - 09/07	\$3,120.00
F Series 6HK1 - TCS Sitec2 Euro 4 255/295hp 10/07 - 10/10	\$3,940.00
F Series 6HK1 - TCN SITEC 1 Euro 190hp 11/03 - 10/07	\$3,030.00
F Series 6HK1 - TCC / 6HK1 - TCN / 6HK1 - TCS SITEC 3 Euro 5 10/10 - 12/15	\$3,950.00
FX* 6UZ1 SITEC 2 Euro 4 325hp 01/08 - 10/10	\$5,700.00
FX*/FY* 6UZ1 - TCC SITEC 3 Euro 5 350hp 11/10 - 12/15	\$6,450.00
FX*/FY* 6UZ1 - TCC SITEC 3 Euro 5 350hp 11/10 - 12/15	\$5,740.00
F Series 6SD1 - TCN SITEC 1 Euro 3 270hp up to 11/02	\$3,920.00
F Series 6SD1 - TC SITEC 1 Euro 3 275hp 12/02 - 09/07	\$4,100.00



6 cylinder rebuild kit shown.

AIR CLEANERS

FROM **\$49.00**

Air cleaner	NPS 4HK1 07/05 - 09/07, NPR / NQR 11/02 - 09/07	\$59.00
Air cleaner	NKR 12/93 - 10/02 w / rear vertical air intake, NKR 4JH1 11/02 - 09/07, NPR / NQR 12/93 - 10/02 w / rear vertical air intake	\$49.00
Air cleaner - Outer	FRR / FSR 6HE1 05/00 - 10/02, FRR / FSR 6HK1 11/02 - 09/07, FSS / FTS 6HK1 - TCC 06/04 - 09/07, FSS / FTS 6HK1 11/02 - 09/07, FV* 6SD1 01/96 - 04/00, FV* / GV* 6SD1 / 6HK1 11/02 - 09/07	\$149.00
Air cleaner - Inner	FRR / FSR 6HE1 05/00 - 10/02, FRR / FSR 6HK1 11/02 - 09/07, FSS / FTS 6HK1 - TCC 06/04 - 09/07, FSS / FTS 6HK1 11/02 - 09/07, FV* 6SD1 01/96 - 04/00, FV* / GV* 6SD1 / 6HK1 11/02 - 09/07	\$55.00
Air Cleaner - Inner	FSR CNG 10/07 - 12/15, FR* / FS*/FT* / FV* 10/07 - current	\$68.00
Air cleaner - Outer	FSR CNG 10/07 - 12/15, FR* / FS* / FT* / FV* 10/07 - current	\$109.00
Air cleaner	NL* 10/07 - current, NNR / NPR / NQR / NPS 10/07 - current	\$85.00



WINDOW SWITCHES

FROM **\$65.00**

Window switch - Driver's	NL* / NP* / NQ / FR* / FS* / FT* / FV*FX* / FY 10/07 - current	\$129.00
Window switch - Passenger	NL* / NP* / NQ / FR* / FS* / FT* / FV*FX* / FY 10/07 - current	\$79.00
Window switch - Driver's	NPR / NQR / NPS 01/03 - 09/07	\$135.00
Window switch - Passenger	NPR / NQR / NPS 01/03 - 09/07	\$65.00
Window switch - Driver's	FR* / FS* / FT* / FV* 01/96 - 09/07	\$159.00
Window switch - Passenger	FR* / FS* / FT* / FV* 01/96 - 09/07	\$85.00
Window switch - Driver's	CX* / EX* 05/01 - current	\$159.00
Window switch - Passenger	CX* / EX* 05/01 - current	\$85.00

*Applies to all models in series.

ISUZU
BEST VALUE PARTS

The best value alternative

DEPENDABLE PARTS FOR YOUR DEPENDABLE PARTNER.

BVP STARTER MOTORS AND ALTERNATORS

FROM **\$455.00**

Constructed from high quality components to ensure correct fitment and reliability.

Alternator	FS* / FT* / FV* with 6BG1T / 6BG1 Engines 1986-95	\$795.00
Alternator	FS* / FT* / FV* with 6HE1 / 6SA1T Engine 1988-95	\$498.00
Alternator	NK* / NP* / NQ* with 4HF1 / 4HG1 Engines 1994-96	\$599.00
Alternator	NK* / NPS with 4HF1 1994-95	\$543.00
Starter Motor	NK* / NPR / NQ* with 4HF1 Engine 1991-98	\$555.00
Starter Motor	FV* / GV* with 6SD1T Engine up to 01/2008	\$575.00
Starter Motor	NK* / NPR / NQ* with 4B* Engines 1985-98	\$455.00
Starter Motor	FS* / FT* / FV* with 6BD1T / 6BG1 Engines 1986-95	\$460.00



BVP ENGINE MOUNTS

FROM **\$23.00**

Engine Mount	LT111 91 - on, FSR32,33 96 - on, FVR / GVR 96 - on, FRR / FSR / FRD 00 - on, FTR 00 - on, FV / GV 00 - on, FSR (CNG) 09 - on, F series 6HK1 08 - on	\$60.00
Engine Mount RH	NKR 4JB1 / 4JG2 94 - 02	\$23.00
Engine Mount LH		\$23.00
Engine Mount RH	NPR / NQR 4HE1 / 4HF1/4HG1 99 - 02 excluding opt 7KJ	\$42.00
Engine Mount LH		\$42.00
Engine Mount RH	NKR 4HF1 99 - 07	\$32.00
Engine Mount LH		\$35.00
Engine Mount RH	NPR / NQR 4HF1 / 4HG1 99-02 with opt 7KJ	\$42.00
Engine Mount LH		\$42.00



BVP OIL FILTERS

FROM **\$14.00**

FX* / GX* 10/07 onwards, FY* 12/12 onwards	\$25.00
CX* / CY* 05/01 - onwards, EXD 03/06 - onwards, EXY 10/07 onwards, FX* / GX 10/07 onwards, FY* 12/12 onwards	\$14.00
FV* 6SA1 02/92 - 12/95, FV* / GV* 6SD1 01/96 - 09/07	\$55.00
FS* / FT* / FV* 6HH1 01/96 - onwards, FR* / FS* / FT* / FV* 6HK1 03/03 - 09/07, FR* / FS* / FT* / FV* 6HK1 10/07 onwards	\$35.00
NKR 4HF1 11/98 - 11/02, NPR / NQR / NPS 4HE1 / 4HK1 01/03 - 09/07, NPR / NQR / NPS 10/07 - 06/15, FR* / FS* 10/07 - 06/15	\$24.00
NKR 4JH1 06/01 - 04/02	\$24.00
NL* / NNR 4JJ1 10/07 - 06/15	\$15.00

BVP SHOCK ABSORBERS

FROM **\$32.00**

Maximise safety and handling. Ensures optimum shock absorption for a more comfortable ride.

Shock absorber, frt	NKR 1999-2006	\$35.00
Shock absorber, frt	NPR, NQR 1994-2006	\$35.00
Shock absorber, frt	NPR 2009 - ONWARDS	\$32.00
Shock absorber, rr	NL*, NP*, 200/300, 1998 - onwards	\$37.00
Shock absorber, rr	NPR, NQR, 400/450, 2008 - onwards	\$38.00



BVP BATTERIES

FROM **\$126.00**

Reliable starting power. Low maintenance design.

N series up to 09/07	\$126.00
N series 10/07 onwards	\$126.00
FT* 2008 onwards	\$133.00

BVP WIPER BLADES

FROM **\$9.50**

Universal wiper blades suitable for many makes and models of truck.

500mm wiper blade - U-hook type	All models	\$11.00
550mm wiper blade - U-hook type	All models	\$9.50



*Applies to all models in series.

ISUZU

ACCESSORIES

MAXIMISE EFFICIENCY, SAFETY AND PRODUCTIVITY WITH ISUZU GENUINE ACCESSORIES.

BULLBARS

FROM **\$2,999.00**

The only Bullbar approved by Isuzu Australia. ADR compliant and crash tested in the Isuzu Japan factory to ensure correct airbag deployment in the event of an accident. Modern design with a corrosion resistant polished alloy finish which complements the look of the truck.

NLR / NLS 07/10 - onwards	\$3,160.00
NN* / NP* / NQ* without foglamps 07/10 - onwards	\$2,999.00
NN* / NP* / NQ* with foglamps 07/10 - onwards	\$3,030.00
FRR 4HK1 - TCS, FRR500 exc. Euro5 crew cab 10/07 - onwards	\$3,300.00
FRR 4HK1 - TCH 01/16 - onwards, FRR500 Euro 5 crew cab 10/07 - 12/15, FRR / FSD 6HK1 01/16 - onwards, FSR / FRR600 / FRD600 10/07 - 12/15	\$3,300.00
FSS 10/07 - onwards	\$5,900.00
FTS 10/07 - onwards	\$5,900.00
FTR with factory FUPD 04/12 - onwards	\$5,640.00
FV*/GV* with factory FUPD 04/12 - onwards, FX* / GX* with factory FUPD 12/12 onwards, FY* 12/12 onwards	\$5,870.00

FUPD = Front Underrun Protection Device



WHEEL SIMULATORS

FROM **\$336.00**

Includes front and rear simulators, axle covers and lug nut covers. Great chrome-like finish. Resists rust and corrosion.

19.5" Wheel simulator kit	NQR 2005 onwards	\$340.00
17.5" Wheel simulator kit	NPR 250 / 300 / 400, 2005-2015 NPR45 / 65/75 - 190, 2015 onwards	\$336.00



CHROME GRILLES

FROM **\$162.00**

NL* 10/07 - 05/15	\$162.00
NL* 06/15 - onwards	\$390.00
NNR / NP* / NQR 10/07 - 05/15	\$210.00
NNR / NP* / NQR 06/15 - onwards	\$263.00
FR* / FS* 10/07 - 12/15	\$547.00
FR* / FS* 01/16 - onwards	\$879.00
FT* / FV* single cab 01/08 - 12/15	\$559.00
FT* / FV* 01/16 - onwards	\$689.00
FX* 10/07 - 08/17, FY* 12/12 - 09/17	\$689.00

BEACON LIGHT SWITCH

\$23.00

FR* / FS* / FT* / FV* / FX* / FY* 10/07 - current \$23.00



OVERHEAD CONSOLE NET KIT

\$48.00

NL* / NP* / NQ 10/07 - current \$48.00

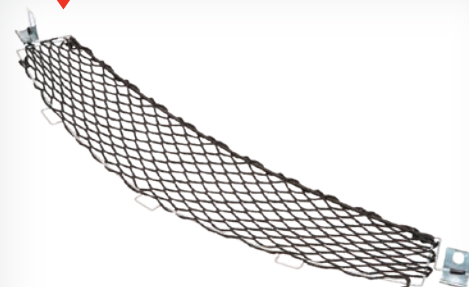


RUBBER FLOOR MATS

FROM **\$45.00**

Durable tailored heavy duty rubber floor mats protect the original carpet in your vehicle from dirt, grime and everyday wear and tear.

NLR / NLS 2008 - onwards	\$54.00
NNR / NPR / NQR 2008 - onwards	\$54.00
FR* / FS* 2008 - onwards	\$45.00
FT* / FV* 2008 - onwards	\$54.00
FX* 2008 - onwards, FY* 2013 - onwards	\$49.00
CX* / CY* / EX* 2003 - onwards	\$73.00



*Applies to all models in series.

ISUZU

DRIVELINE

TOP GEAR AT GREAT PRICES.

MERITOR KING PIN KITS

FROM **\$209.00**

Ezi-steer low friction bushes reduce steering effort and ensure longer service life. Large diameter king pins further extend service life and provide excellent durability. King pin seal prevents leakage and provides improved lubrication.

R201475	MFS73 front axle	\$267.00
R201309	FG941 front axle	\$209.00
R201607	MFS73 front axle	\$267.00
R201310	FG941 front axle	\$209.00



MERITOR DIFF CARRIERS

FROM **\$2,867.00**

RRL23160 [†]	DIFF CARRIER; RR 46/160 DCDL	\$4,504.00
RPL23160 [†]	DIFF CARRIER; FWD 46/160 DCDL	\$7,458.00
RP23160 [†]	DIFF CARRIER; FWD 46/160	\$7,001.00
RR23160 [†]	DIFF CARRIER; RR 46/160	\$4,042.00
RRL20145 [†]	DIFF CARRIER; RR 40/145 DCDL	\$3,214.00
RPL20145 [†]	DIFF CARRIER; FWD 40/145 DCDL	\$5,691.00
RP20145 [†]	DIFF CARRIER; FWD 40/145	\$5,169.00
RR20145 [†]	DIFF CARRIER; RR 40/145	\$2,867.00

[†]Available in various ratios. Please contact your Isuzu dealer for full details.



MERITOR BRAKE SHOES

FROM **\$84.00**

Contains two shoes and hardware kit for one wheel end. Shoe table arc and dimensions engineered to OEM specs. FF rated friction material. Anchor pins and rollers made from case hardened steel.

KSMA2121308Q	Front brake kit 4" early KW, Ford and International	\$124.00
KSMA2124514Q	Front brake kit 6" Meritor front axle	\$124.00
KSMA2124515Q	Rear brake kit 7" Meritor axle with Q brake	\$85.00
KSMA2124707QP	Rear brake kit 7" Meritor axle with Q plus brake	\$84.00
KSMA3124515Q	Premium rear brake kit 7" Meritor axle with Q brake	\$111.00
KSMA3124707QP	Premium rear brake kit 7" Meritor axle with Q plus brake	\$111.00

*Subject to \$2200 core deposit

MERITOR BRAKE CHAMBERS

\$67.00

EBC2424C	2424 Brake chamber	\$67.00
EBC2430C	2430 Brake chamber	\$67.00
R873030C	3030 Brake chamber	\$67.00



EATON CLUTCH KIT

\$1,285.00

Featuring an enhanced release bearing design and robust bushing material. While stocks last.

308935529	Advantage clutch kit	\$1,285.00
-----------	----------------------	------------



X30 STEELITE BRAKE DRUM

\$230.00

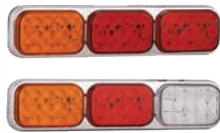
Provides exceptional strength, durability and concentricity whilst reducing weight.

53123537002	X30 Steelite Brake drum	\$230.00
-------------	-------------------------	----------

ISUZU LIGHTING.

LED LIGHTS FROM \$9.00

Full range of lighting available. Contact your local authorised Isuzu Dealer for further details.



LED REAR HORIZONTAL COMBINATION LIGHT
\$91.00 EACH

Chrome base.
Available in Amber/Red/Red or Amber/Red/White.



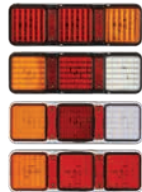
LARGE LED REAR COMBINATION LIGHT
FROM **\$156.00** EACH

Amber/Red/Red – \$156.00ea.
Amber/Red/White – \$177.00ea.



LED REAR VERTICAL COMBINATION LIGHT
\$91.00 EACH

Chrome base.
Available in Amber/Red/Red or Amber/Red/White.



LED COMBINATION LIGHT WITH REFLECTORS
\$83.00 EACH

Available with Black or Chrome base and Amber/Red/Red or Amber/Red/White.



7" ROUND LED HEADLIGHT INSERT WITH DRL
\$265.00 EACH



LED LIGHT
FROM **\$82.00** EACH

30 LEDs.
Amber Indicator – \$82.00ea.
Red Stop/Tail – \$82.00ea.
Amber/Red Stop/Tail – \$96.00ea.



LED SIDE MARKER
\$9.00 EACH

Black or Chrome base.
Available in Red, Amber, White or Red/Amber



LED NUMBER PLATE LIGHT
\$22.00 EACH

Black or Chrome base.



LED NUMBER PLATE LIGHT
\$9.00 EACH

Chrome base.

ISUZU MERCHANDISE.

MERCHANDISE FROM \$5.00

View the full range of merchandise available at our website – parts.isuzu.com.au or contact your local authorised Isuzu Dealer for further details.



Key Ring



Sports Cap



Glass Coffee and Tea Set



Coffee Mug



Isuzu Premium Jacket



Isuzu Money Box



Kid's Neoprene Backpack



Agitator Toy



Dump Truck Toy



Kid's Luggage

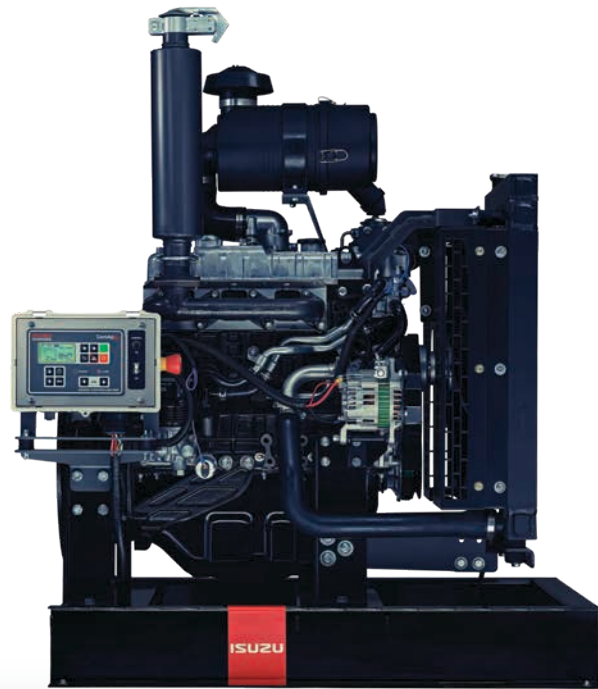
Kid's Luggage (NEW)	\$96.00
Coffee Mug	\$13.50
Key Ring	\$13.00
Glass Coffee and Tea Set	\$44.00
Kid's Neoprene Backpack	\$31.00
Isuzu Premium Jacket	\$85.00
Agitator Toy	\$10.00
Dump Truck Toy	\$10.00
Isuzu Money Box	\$5.00
Sports Cap	\$5.00

Premium jacket available in various sizes. Please enquire with your local dealer.

ISUZU
ENGINES

INDUSTRIAL ENGINES.

MADE TO STOCK
POWER UNITS

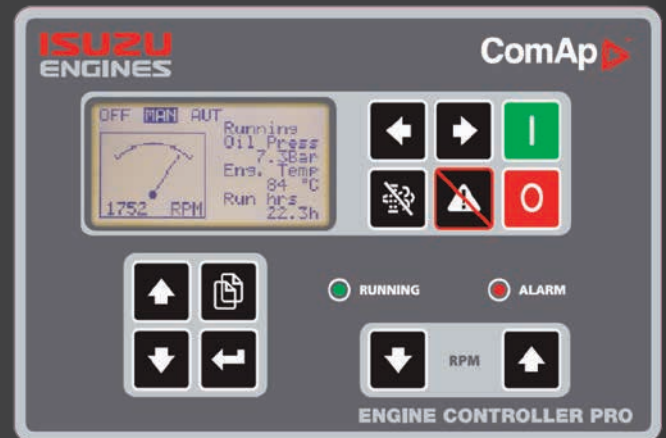


ISUZU INDUSTRIAL PUMP POWER UNITS

Isuzu's already impressive range of MTS industrial power units just got a whole lot more impressive. Introducing the range of irrigation specific MTS power units, designated as 'PU10' models. Fitted with standard features others call options, the Isuzu 'PU10' models are ready to handle any irrigation challenge you can throw at them. With options for 3G remote monitoring and control, engine control via pressure or flow and built in programmable 24/7 hour/day calendar, Isuzu 'PU10' power units are ready to be configured for life on the land.

Model	Rated Performance Output	Flywheel Housing	Flywheel	Price
C Series				
2CA1AZP01PU10	9.8KW [13HP] AT 3600 RPM	SAE #6	7.5"	\$8,525.00
3CA1AZP01PU10	16.3KW [21HP] AT 3600 RPM	SAE #6	7.5"	\$8,800.00
3CB1CZP01PU10	18.7KW [25HP] AT 3200 RPM	SAE #5	7.5"	\$8,937.50
3CE1BDZP2PU10	26.9KW [36HP] AT 3000 RPM	SAE #5	7.5"	\$10,037.50
3CD1TBKZP1PU10	29.1KW [39HP] AT 2800 RPM	SAE #5	7.5"	\$10,931.25
L Series				
4LE1NYBW02PU10	35.9KW [48HP] AT 2600 RPM	SAE #4	10"	\$11,343.75
4LE2PW10PU10	38.1KW [51HP] AT 3000 RPM	SAE #4	10"	\$11,343.75
4LE1TYBW01PU10	45KW [60HP] AT 2500 RPM	SAE #4	10"	\$16,637.50
J Series				
4JG1PKPU10	46.2KW [62HP] AT 2600 RPM	SAE #4	10"	\$15,400.00
4JG1TPW01PU10	62.5KW [83HP] AT 2500 RPM	SAE #4	10"	\$17,462.50
4B Series				
4BG1PWPU10	66.4KW [89HP] AT 2500 RPM	SAE #3	10"	\$18,700.00
4BG1TRW01PU10	72KW [96HP] AT 2500 RPM	SAE #3	10"	\$19,250.00
4BG1TRWPU10	91.7KW [123HP] AT 2500 RPM	SAE #3	10"	\$19,800.00
6B Series				
6BG1QWPU10	93.2KW [125HP] AT 2500 RPM	SAE #3	11.5"	\$21,780.00
6BG1TRW02PU10	121.6KW [163HP] AT 2200 RPM	SAE #3	11.5"	\$23,430.00

All 'PU10' irrigation models are fitted with the advanced new Isuzu ENGINE CONTROLLER PRO. A cost effective, user friendly and customisable Engine and Irrigation Pump control, monitoring and protection system.



Engine Control Features	Irrigation Pump Control Features
Complete mechanical & electronic engine control, monitoring and protection	Low oil pump pressure switch control*
Oil pressure, coolant temperature, battery voltage and engine speed	Low oil/water level switch control*
IP65 enclosure with built-in E-Stop	Oil/water flow switch control*
Remote start/stop, shutdown engine control	Pump pressure switch/sensor control and monitoring (sensor only)**
Complete detailed events history log	Programmable 24/7 hour/day automatic pump control

ENGINE CONTROLLER PRO available options		
Part Number	Description	Price
92957431	PRESSURE TRANSDUCER 10BAR WITH CABLE	\$405.66
92957549	PRESSURE TRANSDUCER 16BAR WITH CABLE	\$405.66
92957429	3G 4G REMOTE COMM ENG CTRL***	\$2,254.89
LCA12242396	LOW COOLANT ALARM	\$253.96
92957435	HARNESS PATCH; 1M DT 8 PIN (required for PRESSURE TRANSDUCER connection)	\$150.45

*Programmable up to 5 min start-up delay. **Programmable up to 60 min start-up delay. ***Customer to supply SIM card.

SEE THE REAL DEALERS.

^PDenotes Isuzu Parts only ^{SP}Denotes Isuzu Service & Parts only Denotes also Industrial Engines • Denotes locations which have a Mobile Service Unit

ACT				
Canberra (Queanbeyan)	CANBERRA ISUZU	16 Kendall Avenue	Ph: 02 6297 3862	www.canberratrucks.com.au
NEW SOUTH WALES				
Broken Hill ^{SP}	BROKEN HILL TRUCK CENTRE	12 Kanandah Road	• Ph: 08 8088 7777	www.bhtc.com.au
Dubbo	TRACSERV TRUCKS	19 Purvis Lane	• Ph: 02 6884 2023	www.tracserv.net.au
Gosford (West)	GILBERT & ROACH ISUZU	Cnr Manns & Yandina Roads	• Ph: 02 4323 1000	www.gilbertandroach.com.au
Inverell	KENWAY & CLARK	10-12 Swanbrook Road	• Ph: 02 6721 6900	www.kenwayandclark.com.au
Lismore (South)	NORTHERN RIVERS ISUZU	4 Cook Street	• Ph: 02 6627 8450	www.northernriversisuzu.com.au
Macksville	MIDCOAST TRUCKS	Cnr Binalong Way & Kylie Street	• Ph: 02 6568 2888	www.midcoasttrucks.com.au
Moree	KENWAY & CLARK	369-379 Frome Street	• Ph: 02 6750 8300	www.kenwayandclark.com.au
Newcastle (Hexham)	GILBERT & ROACH ISUZU	320 Pacific Highway	• Ph: 02 4964 8641	www.gilbertandroach.com.au
Orange	TRACSERV TRUCKS	9 Scott Place	• Ph: 02 6360 1851	www.tracserv.net.au
South Nowra ^P	DWYERS TRUCK CENTRE	23 Central Avenue	• Ph: 02 4423 0630	www.dwyerstruckcentre.com.au
Sydney (Arncliffe)	SUTTONS MOTORS ARNCLIFFE	93 Princes Highway	• Ph: 02 9335 9000	www.suttonstrucks.com.au
Sydney (Huntingwood)	GILBERT & ROACH	8 Huntingwood Drive	• Ph: 02 8825 1000	www.gilbertandroach.com.au
Sydney (Narellan)	GILBERT & ROACH	7 Millwood Avenue	• Ph: 02 4647 7377	www.midcoasttrucks.com.au
Tamworth	PEEL VALLEY ISUZU	2-10 Dampier Street	• Ph: 02 6768 3111	www.peelvalleygroup.com.au
Wagga Wagga	WAGGA MOTORS	32 Dobney Avenue	• Ph: 02 6933 0100	www.waggamotors.com.au
Wollongong (Coniston)	DWYERS ISUZU	2 John Cleary Place	• Ph: 02 4251 6720	www.dwyerstruckcentre.com.au
NORTHERN TERRITORY				
Alice Springs	CJD EQUIPMENT	8-10 Cameron Street	Ph: 08 8959 0500	www.cjd.com.au
Darwin	CJD EQUIPMENT	1 Toupein Road, Yarrowonga	Ph: 08 8935 9100	www.cjd.com.au
QUEENSLAND				
Brisbane (Archerfield)	BRISBANE ISUZU	26 Kerry Road	• Ph: 07 3373 2400	www.brisbaneisuzu.com.au
Brisbane (Burpengary)	BRISBANE ISUZU	230 Eastern Service Road, Bruce Highway	• Ph: 07 3385 4300	www.brisbaneisuzu.com.au
Brisbane (Eagle Farm)	BRISBANE ISUZU	208 Fison Avenue	• Ph: 07 3866 2200	www.brisbaneisuzu.com.au
Bundaberg ^{SP}	KEN LANDT DIESEL REPAIRS	104 Scotland Street	• Ph: 07 4153 1849	www.kenlandtdiesel.com.au
Cairns	IRELAND ISUZU	25-27 O'Leary Street	• Ph: 07 4052 3666	www.irelands.com.au/isuzu
Emerald ^{SP}	DAVID LOWERY DIESEL REPAIRS	Lot 6 Cottonview Road	• Ph: 07 4987 4444	
Gold Coast (Arundel)	GOLD COAST ISUZU	1-3 Newheath Drive	• Ph: 07 5583 8850	www.goldcoastisuzu.com.au
Goondiwindi	KENWAY & CLARK	7 Wilson Court	• Ph: 07 4671 2400	www.kenwayandclark.com.au
Gympie	MADILL ISUZU	2 Bruce Highway	• Ph: 07 5480 5547	www.madillisuzu.com.au
Hervy Bay	PORT CITY ISUZU	91 Islander Road	• Ph: 07 4194 4406	www.portcityisuzu.com.au
Mackay (Paget)	CROKERS TRUCK CENTRE	2-10 Southgate Drive	• Ph: 07 4952 9500	www.crokerstruckcentre.com.au
Maryborough	PORT CITY ISUZU	92 Adelaide Street	• Ph: 07 4194 4444	www.portcityisuzu.com.au
Mt Isa ^{SP}	SUPERIOR MACHINERY MAINTENANCE	22-24 Traders Way	• Ph: 07 4743 0347	www.superiormachinerymaintenance.com.au
Rockhampton (Parkhurst)	CENTRAL ISUZU	199 Boundary Road	• Ph: 07 4839 8888	www.centralisuzu.com.au
Roma	BLACK TRUCK SALES	Lot 4 & 5 Lindsay Court	• Ph: 07 4622 8288	www.blacktrucksales.com.au
Sunshine Coast (Forest Glen)	MADILL ISUZU	100 Sandalwood Lane	• Ph: 07 5352 8251	www.madillisuzu.com.au
Toowoomba	BLACK TRUCK SALES	494-498 Boundary Road	• Ph: 07 4631 4200	www.blacktrucksales.com.au
Townsville (Garbutt)	TONY IRELAND ISUZU	36 Duckworth Street	• Ph: 07 4726 7777	www.tonyireland.com.au
SOUTH AUSTRALIA				
Adelaide (Burton)	NORTH EAST ISUZU	112 Port Wakefield Road	• Ph: 08 8280 9899	www.neisuzu.com.au
Adelaide (Hampstead Gardens)	ADELAIDE ISUZU	253 North East Road	• Ph: 08 8261 6006	www.adelaideisuzu.com.au
Mt Gambier	MOUNT GAMBIER ISUZU	203 Jubilee Highway West	• Ph: 08 8725 7999	www.mountgambierisuzu.com.au
Port Augusta	PORT AUGUSTA ISUZU	3 Footner Road	• Ph: 08 8643 6233	www.paisuzu.com.au
TASMANIA				
Burnie ^{SP}	WEBSTER TRUCKS	17-19 River Road	Ph: 03 6431 9855	www.webstertrucks.com.au
Devonport (East) ^{SP}	WEBSTER TRUCKS	Lot 1 6183 Frankford Highway	Ph: 03 6427 5444	www.webstertrucks.com.au
Hobart (Derwent Park)	WEBSTER TRUCKS	8C Lampton Avenue	Ph: 03 6211 0530	www.webstertrucks.com.au
Launceston (Kings Meadows)	WEBSTER TRUCKS	4 Connector Park Road	Ph: 03 6340 7766	www.webstertrucks.com.au
VICTORIA				
Bairnsdale	GIPPSLAND TRUCK CENTRE	180 Princess Highway	• Ph: 03 5152 1616	www.gtctruck.com.au
Ballarat (Wendouree)	BALLARAT ISUZU	356 Dowling Street	• Ph: 03 5335 3600	www.ballaratisuzu.com.au
Bendigo (Epsom)	POYSER TRUCKS	119-141 Midland Highway	• Ph: 03 5444 4011	www.poysermotors.com.au
Geelong	WINTER & TAYLOR	4-50 School Road	• Ph: 03 5247 8981	www.wth.com.au
Horsham ^{SP}	G&S BIGHAM TRUCK REPAIRS	87 Golf Course Road	• Ph: 03 5382 5893	
Leongatha ^{SP}	GTM TRUCK CENTRE	16 Cusack Road	• Ph: 03 5662 5266	www.gtmleongatha.com.au
Melbourne (Campbellfield)	WESTAR TRUCK CENTRE	Hume Highway & Northbourne Road	• Ph: 03 9305 3155	www.westartrucks.com.au
Melbourne (Dandenong)	PATTERSON CHENEY TRUCKS	55 Kirkham Road West	• Ph: 03 9215 2300	www.pattersoncheney.com.au
Melbourne (Derrimut)	WESTAR TRUCK CENTRE	1 Australis Drive	• Ph: 03 9394 0000	www.westartrucks.com.au
Mildura	MILDURA TRUCK CENTRE	293 Benetook Avenue	• Ph: 03 5051 2800	www.milduratruck.com.au
Moe ^{SP}	MOE DIESEL & AUTOMOTIVE SERVICES	148 Moore Street	• Ph: 03 5127 2933	
Shepparton	TAIG BROS	6 Wheeler Street	• Ph: 03 5821 9811	www.taigbros.com.au
Swan Hill	THE TRUCK SPECIALISTS	18 Aerodrome Rd	• Ph: 03 5033 1372	www.milduratruck.com.au
Warrnambool ^{SP}	WEST COAST SERVICE CENTRE	87 Rooneys Road	• Ph: 03 5562 0665	
Wodonga	BLACKLOCKS ISUZU	190 Melbourne Road	• Ph: 02 6057 8777	www.blacklocks.com.au
WESTERN AUSTRALIA				
Albany	ALBANY CITY ISUZU	92-98 Earl Street	Ph: 08 9842 8000	www.albanycitymotors.com.au
Bunbury (Picton)	SOUTH WEST ISUZU	3 Giorgi Road	Ph: 08 9725 4911	www.southwestisuzu.com.au
Geraldton ^{SP}	ROAD RUNNER MECHANICAL SERVICES	283 Place Road	Ph: 08 9921 8642	www.roadrunnermechanical.com.au
Kalgoorlie	GOLDFIELDS TRUCK POWER	5 Epis Street	• Ph: 08 9021 4800	www.truckpower.net.au
Newman ^{SP}	PILBARA MOTOR GROUP	18 Pardoo Street	• Ph: 08 9181 6400	www.pilbaramotorgroup.com.au
Perth (Forrestfield)	MAJOR MOTORS	789 Abernethy Road	• Ph: 08 9365 6333	www.majormotors.com.au
Perth (Malaga) ^{SP}	MAJOR MOTORS	65 Croker Drive	• Ph: 08 9249 1740	www.majormotors.com.au
Perth (Bibra Lakes)	MAJOR MOTORS	2 Selkis Road	• Ph: 08 9331 9331	www.majormotors.com.au
Port Hedland (Wedgefield) ^{SP}	MAJOR MOTORS PORT HEDLAND	14 Murrena Street	• Ph: 08 9140 1811	www.majormotors.com.au

ISUZU

PARTS & SERVICE

Prices published are recommended selling prices, include GST and are effective 1st July 2018 until 30th September 2018 or while stocks last. Images are for illustrative purposes only. All parts advertised herein have been included in good faith and on the basis that those parts will be available at participating Isuzu Dealerships at the time of publication. Isuzu and participating Dealers reserve the right to correct any errors made in parts listed and/or the pricing published.