

# REAL DEALS

**ISUZU**  
RELIABILITY IS EVERYTHING

OCT NOV DEC 2021

## Broad range of Genuine Isuzu Filter Kits available

See inside for more details!



**ONLY  
\$265  
EACH**



### 7" Headlight Insert

Stand out from the crowd with LED headlight inserts featuring integrated daytime running lights.



**ONLY  
\$174**

### Meritor® Red Brake Drum

16.5"x7"  
10-Stud x 285mm  
PCD



### Isuzu Diesel Injector Cleaner

350ml **\$13.90**  
1L **\$30.75**



### Isuzu Premixed Coolant

5L	<b>\$29.20</b>
20L	<b>\$113.00</b>
205L	<b>\$942.00</b>
1000L	<b>\$4,484.00</b>

## Broad range of Genuine Isuzu Filter Kits

These kits includes oil filter(s), fuel filter(s), sump plug washer and sedimenter filter(s) and PCV filters where applicable. These kits ensure convenient, efficient servicing.



FR*/FS* 4 cylinder 10/07 - 12/15	<b>\$91.40</b>	FX* 6UZ1 10/07 - 08/10	<b>\$313.00</b>
FR*/FS*/FT*/FV* 6 cylinder 10/07 - 12/15	<b>\$110.00</b>	GIGA 6WG1-TCC/6WG1-TCS 03/13 - onwards	<b>\$315.00</b>
NL*/NNR 10/07 - onwards	<b>\$144.00</b>	FX* 6UZ1 07/11 - 02/16, FY* 6UZ1 12/12 - 02/16	<b>\$317.00</b>
NP*/NQR 10/07 - onwards	<b>\$173.00</b>	GIGA 6WG1-TCC/6WG1-TCS 10/09 - 06/11	<b>\$318.00</b>
FR*/FS*/FT*/FV* 6 cylinder 01/16 - onwards	<b>\$200.00</b>	GIGA 6WG1-TCC/6WG1-TCS 07/11 - 02/13	<b>\$320.00</b>
FR*/FS* 4 cylinder 01/16 - onwards	<b>\$220.00</b>	FX*/FY* 6UZ1 03/16 - onwards	<b>\$323.00</b>
FX* 6UZ1 09/10 - 06/11	<b>\$223.00</b>	GIGA 6WG1-TCC/6WG1-TCS 10/07 - 09/09	<b>\$340.00</b>
GIGA 6WG1-TCN 08/11 - onwards	<b>\$238.00</b>		

**Genuine Parts**



## Water Pumps

NL*/NNR 10/07 - onwards	<b>\$324</b>
NP*/NQR/FR*/FS* 4HK1 10/07 - onwards	<b>\$345</b>
FR*/FS*/FT*/FV* 6HK1 10/07 - 12/15	<b>\$603</b>
FX*/FY* 10/07 - onwards	<b>\$965</b>

## Isuzu Batteries

Maintenance-free battery range, suited to Australia's harsh conditions. Developed to work with today's complex and demanding vehicle electronics.

NS70LH	<b>\$186</b>
N100MF	<b>\$274</b>
N100LMF	<b>\$274</b>
N150MF	<b>\$352</b>







## Radiators

Excellent coolant flow allowing for better heat dispersion and more consistent temperatures, ensuring the cooling system performs as intended.

NPR/NQR with 4HK1 engine and manual transmission 10/07 - 08/10	<b>\$1,359</b>
NNR/NPR/NQR 09/10 - onwards with manual transmission	<b>\$1,519</b>
NNR/NPR/NQR with 4HK1 engine and AMT 10/07 - 08/10	<b>\$1,527</b>
FRR/FSR/FSS/FTR/FTS 04/96 - 04/00	<b>\$1,987</b>



Genuine Parts

## Thermostats

Keep your Isuzu engine operating at the ideal temperature with Genuine Isuzu thermostats.



(82°C) 4HK1 engines 2008 - onwards	<b>\$31.15</b>
4HG1 engines 1999-2003	<b>\$37.80</b>
6HK1 engines 1996-2000	<b>\$48.25</b>
6HK1 engines 2008 - onwards	<b>\$50.50</b>
6SD1 engines 1996-2006	<b>\$76.40</b>



### Shift Brake Cleaner Aerosol

400gm



### Shift Truck Wash

Shift Truck Wash effectively removes road grime and dirt from a range of surfaces.

20L	<b>79.30</b>
200L	<b>713.00</b>

Lubricants



### Shift Brake Cleaner

Shift Brake Cleaner is a versatile solvent cleaner that effectively cleans oil, dirt, grease and dust from brake components.

20L **\$115.00**



### Shift Tyre Shine

Shift Tyre Shine is formulated with silicone which rejuvenates tyres and provides a shiny finish.

20L **\$146.00**

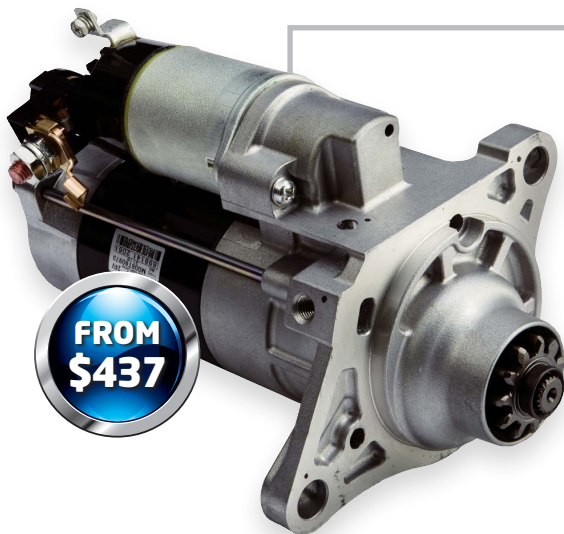
## Isuzu Clutch Kits

Isuzu's clutch plate structure features 17 components compared to nine in a popular competitor brand. The cushion plate allows for greater absorption of shock when the transmission and engine are engaging in comparison to many aftermarket product offerings.

NKR with 4JG2 engine	<b>\$227</b>
NPR 4HK1 with MZZ Transmission 06/15 - onwards, NQR with MZZ Transmission	<b>\$453</b>
NPR 4HK1 with MYY Transmission 02/05 - onwards, NPS with 4HK1	<b>\$464</b>
FRR 6HK1-TCN with MZX/MZW Transmission 10/10 - onwards, FSR/FSD 6HK1-TCN with MZW Transmission 07/13 onwards, FSR/FSD 6HK1-TCC with MZW Transmission up to 09/17.	<b>\$862</b>
FRR 6HK1-TCN with MZX/MZW Transmission up to 09/10, FRR 6HK1-TCC with MZX/MZW Transmission, FSR/FSD 6HK1-TCN with MZW Transmission up to 06/13, FSR/FSD 6HK1-TCC with MZW Transmission 10/17 onwards, FSD 6HK1-TCN with MZX Transmission	<b>\$910</b>
FVD/FVL/FVM/FVR/FVY/FVZ/GVD/GVR 6HK1-TCS with ZF 9S1110 Transmission (ceramic clutch) 10/07 - onwards	<b>\$927</b>



**BVP**

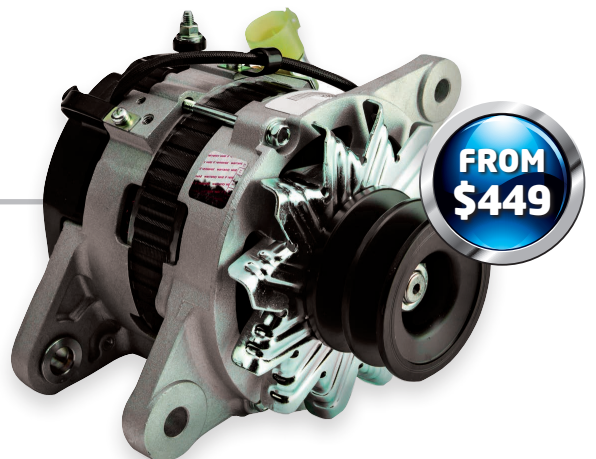


## BVP Starter Motors

NK*/NPR/NQ* 2000 - onwards	<b>\$437</b>
FR*/FS*/FT*/FV* 08 - onwards	<b>\$456</b>
NK*/NPR/NQ* with 4B* Engines 85-98	<b>\$466</b>
FS*/FT*/FV* with 6BD1T/6BG1 Engines 86-95	<b>\$605</b>
NK*/NPR/NQ* with 4HF1 Engines 91-98	<b>\$637</b>
FV*/GV* with 6SD1T Engines up to 01/08	<b>\$660</b>

## BVP Alternators

NL*/NNR 10/07 - 06/15	<b>\$449</b>
NPR/NPS/NQR 10/07 - 12/17	<b>\$487</b>
NPR/NPS/NQR 04/05 - 09/07	<b>\$709</b>
NPR/NPS/NQR 05/03 - 09/07	<b>\$731</b>
NPR/NPS/NQR 10/07 - 12/17	<b>\$1,125</b>





## Carpet Floor Mats

Replace worn and jaded mats with genuine carpet floor mats to provide ongoing protection.

NNR, NPR, NQR with AMT	<b>\$143</b>	NLR, NLS	<b>\$172</b>
FRR 600, FSR, FSD, FSS	<b>\$146</b>	ALL FT*, FV* models	<b>\$196</b>
NNR, NPR, NQR, NPS without AMT	<b>\$147</b>	ALL FR*, FS* models	<b>\$261</b>



## Weathershields

Slim - FX-GIGA 2008-	<b>\$74.35</b>
Full size LH - All N Series 2008-	<b>\$76.00</b>
Full size RH - All N Series 2008-	<b>\$76.00</b>
Full size LH - FX-GIGA 2008-	<b>\$88.45</b>
Full size RH - FX-GIGA 2008-	<b>\$88.45</b>
Slimline Tinted Pair (LH &RH) - All N Series 2008-	<b>\$191.00</b>



## Isuzu Seat Covers

### Sheepskin - Charcoal

F-Series FH 2008 onwards, FX-GIGA	Driver's seat only - to suit ISRI 6860 suspension seat	<b>\$273</b>
-----------------------------------	--	--------------

### Rough Country Canvas - Charcoal

F-Series FH 2008 onwards, FX-GIGA	Driver's seat only - to suit ISRI 6860 suspension seat	<b>\$198</b>
F-Series FH 2008 onwards	Includes driver, centre and passenger covers. Will not suit passenger suspension seat.	<b>\$283</b>
NL* 2008 onwards	Driver & passenger	<b>\$283</b>
NN*/NP*/NQ* 2008 onwards	Rear seat	<b>\$283</b>
NN*/NP*/NQ* 2008-2014	Driver & passenger - excluding suspension driver's seat	<b>\$283</b>
NN*/NP*/NQ* 2015 onwards	Driver & passenger - with suspension driver's seat	<b>\$283</b>
FS*/FR* Crew Cab 2008 onwards	Rear seat	<b>\$322</b>
FT*/FV* Crew Cab 2008 onwards	Rear seat	<b>\$322</b>

### Super Tough HD Canvas - Grey

F Series FH 2008 onwards, FX-GIGA	Driver's seat only - to suit ISRI 6860 suspension seat	<b>\$178</b>
F-Series FH 2008 onwards	Includes driver, centre and passenger covers. Will not suit passenger suspension seat.	<b>\$244</b>
NL* 2008 onwards	Driver & passenger	<b>\$244</b>
NN*/NP*/NQ* 2008 onwards	Rear seat	<b>\$244</b>
NN*/NP*/NQ* 2008-2014	Driver & passenger - excluding suspension driver's seat	<b>\$244</b>
NN*/NP*/NQ* 2015 onwards	Driver & passenger - with suspension driver's seat	<b>\$244</b>
FS*/FR* Crew Cab 2008 onwards	Rear seat	<b>\$283</b>
F-Series FH 2008 onwards	Includes driver, centre and passenger covers. Suits passenger ISRI suspension seat.	<b>\$283</b>
FT*/FV* Crew Cab 2008 onwards	Rear seat	<b>\$283</b>



## Fleetguard® PGPlus™ Premix Coolant

Protects against liner pitting and provides solid corrosion protection for aluminium, cast iron, copper, brass, and solder.



4L Bottle **\$23.55**



20L Drum **\$115**



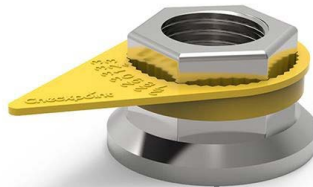
208L Drum **\$1,022**



1000L IBC **\$4,906**

**Allmakes**

### Checkpoint Wheel Indicators



32mm Checkpoint Multi Tooth Yellow

**\$1.05**

33mm Checkpoint Yellow

**\$1.05**

41mm Checkpoint Yellow

**\$1.05**

### Meritor® Red Brake Drum

16.5"x7"  
10-Stud x 285mm PCD



**ONLY \$174**

Lightweight construction for increased payload capacity and improved fuel consumption.

### Eaton® Roadranger Transmissions



Eaton® RTLO20918B Reman Transmission Assembly (Subject to Core Deposit)

Eaton® RTLO22918B Reman Transmission Assembly (Subject to Core Deposit)

**CONTACT YOUR LOCAL DEALER TODAY FOR A GREAT PRICE!**

### Chrome Wheel Accessories



- 41mm S-Steel Nut cover **\$3.00**
- 41mm CR Nut cover Front/Rea (Blister Pack of 10) **\$13.45**
- 41mm CR Flared Nut cover 60mm (Blister Pack of 10) **\$14.65**
- 8" Hub Cap Stainless Steel **\$16.05**
- S-Steel Nut cover 41mm Blister Pack **\$26.55**
- Dust blower with 5 metre hose **\$27.30**

## Fleetguard® Filter Kits



Fleetguard® Filter Kit - Cummins ISC/ISL/ISLe5  
Contains 1x LF9039 & 1x FF5488 **\$70.40**

Fleetguard® Filter Kit - Cummins ISX/Signature EGR  
Contains 1x LF1400NN & 1x FF2200 **\$85.85**

Fleetguard® Filter Kit - Cummins ISXe5/X15  
Contains 1x LF1400NN & 1x FF5776 **\$108.00**

## Meritor® Brake Shoe Kits



Meritor® Standard MG1A Brake Shoe Kit  
16.5" x 7" 4707 Q-Plus **\$76.75**

Meritor® Premium MG2A Brake Shoe Kit  
16.5" x 7" 4707 Q-Plus **\$85.30**

## Meritor® King Pin Kits MFS66 Front Axle

Meritor® King Pin Kit Easy Steer™ Composite Ream **\$380**

Meritor® King Pin Kit FastSet™ No-Ream Spiral **\$651**



## Meritor® King Pin Kits FG941 Front Axle

Meritor® King Pin Kit - Bronze Ream **\$268**

Meritor® King Pin Kit - Easy Steer™ Composite Ream **\$268**

Meritor® King Pin Kit - ReadySet™ No-Ream Bronze **\$323**

Meritor® King Pin Kit - FastSet™ No-Ream Spiral **\$631**

## Meritor® King Pin Kits MFS73/MFS16 Front Axle

Meritor® King Pin Kit - ReadySet™ No-Ream Bronze **\$356**

Meritor® King Pin Kit - Bronze Ream **\$374**

Meritor® King Pin Kit - Easy Steer™ Composite Ream **\$374**

Meritor® King Pin Kit - FastSet™ No-Ream Spiral **\$533**

## Timken® Wheel End Kits

(Includes Bearings & Seal)

WBK4SCR FF Steer Axle - Contains: 1x SET413, 1x SET406, 1x 35066 **\$118**

WBK4SUCR FF HD Steer Axle - Contains: 1x SET413, 1x SET409, 1x 35066 **\$148**

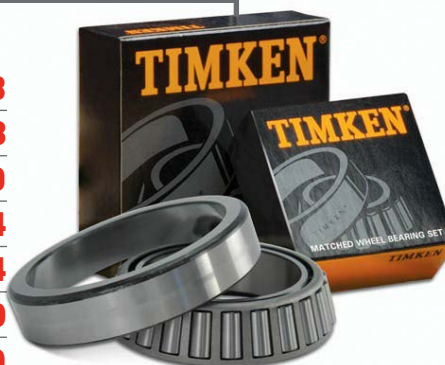
WBK1TSG N Trailer Axle - Contains: 1x SET414, 1x SET413, 1x 307-0743 **\$159**

WBK1TCRP N Trailer Axle - Contains: 1x SET414, 1x SET413, 1x 46300 **\$164**

WBK3DCR R Drive Axle - Contains: 1x SET403, 1x SET401, 1x 47697 **\$164**

WBK3DCRV R Drive Axle - Contains: 1x SET403, 1x SET401, 1x 47693 **\$180**

WBK4SCHB FL Steer Axle - Contains: 1x SET423, 1x SET424, 1x 43764 **\$320**



## Merchandise



Phone Wallet  
**\$5.50**



Wireless Charger  
**\$11.00**



Ottoman Cap  
**\$12.00**



Red Thermo  
Drink Bottle  
**\$12.00**



Badge Cap  
**\$14.00**



Heavy Brushed Cap  
**\$15.00**



Lantern Torch  
**\$18.00**



Wide Brim Hat  
**\$18.00**  
Available in size S and L



2 Tray Lunch Box  
**\$19.00**



Mens Verve Polos  
**\$20.00**  
Available in Charcoal or Navy



Ladies Verve Polos  
**\$20.00**  
Available in Charcoal or Navy



2 Litre Water Jug  
**\$27.00**



Beach Cricket Set  
**\$30.00**



Cooler Bag  
**\$34.00**



Aston Polos  
**\$38.00**



Multi Tool  
**\$38.00**



Cooler Bag Deluxe  
**\$42.00**



Tool & Torch Kit  
**\$50.00**



Comprehensive  
First Aid Kit  
**\$73.00**

Apparel available in various sizes. Contact your Local Dealer for more information.

## Our Transport Industry Partners



VISIT [PARTS.ISUZU.COM.AU/FIND-A-DEALER](https://parts.isuzu.com.au/find-a-dealer) FOR YOUR CLOSEST DEALERSHIP

Prices published are recommended selling prices, include GST and are effective 1st October 2021 until 31st December 2021 or while stocks last. Images are for illustrative purposes only. All parts advertised herein have been included in good faith and on the basis that those parts will be available at participating Isuzu Dealerships at the time of publication. Isuzu and participating Dealers reserve the right to correct any errors made in parts listed and/or the pricing published.