

REAL DEALS

JUL AUG SEP 2020

ISUZU
RELIABILITY IS EVERYTHING

SHEEPSKIN SEAT COVERS



Keep warm in Winter with sheepskin seat covers. Comfortable and durable. High quality 25mm pile made from natural fibres. Tailored to fit your Isuzu perfectly.

WATER PUMPS



NL*/NNR 10/07 - onwards	\$279
NP*/NQR/FR*/FS* 4HK1 10/07 - onwards	\$311
FR*/FS*/FT*/FV* 6HK1 10/07 - 12/15	\$553
FX*/FY* 10/07 - onwards	\$870

HEADLIGHT PROTECTORS



NL*/NN*/NP*/NQR/FR*/FSR/FSD 10/07 - onwards	\$83.75
FTR/FV*/FX* 10/07 - onwards, FY* 12/12 - onwards	\$107

BVP BATTERIES

A cost-effective alternative to owners of older trucks who aren't prepared to compromise on safety and reliability.



NS70	N series up to 09/07	\$132
NS70L	N series 10/07 - onwards	\$132
N70ZZ	FT* 2008 - onwards	\$139

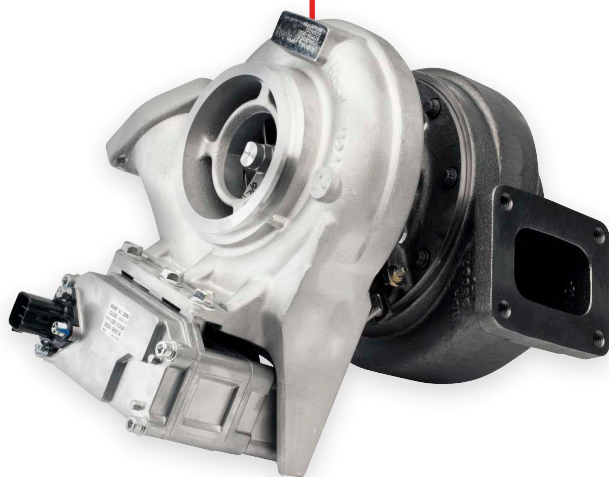
*Applies to all models in range.

HEADLIGHT, FOG LIGHT & COMBINATION LAMPS

High quality genuine light assemblies ensure a correct fit every time and compliance with all relevant safety standards.



Combination Light LH	NKR/NP*/NQR 02/05-09/07	\$139
Combination Light RH	NKR/NP*/NQR 02/05-09/07	\$140
Combination Light LH	FVM/FVZ/FTR/FXZ/FVM 2008 - onwards	\$214
Combination Light RH	FVM/FVZ/FTR/FXZ/FVM 2008 - onwards	\$214
Fog Light RH	NLR/NNR/NPR/NQR/NPS 2008 - onwards, FSR/FRR 2008 - onwards	\$214
Fog Light LH	NLR/NNR/NPR/NQR/NPS 2008 - onwards, FSR/FRR 2008 - onwards	\$214
Fog Light RH	GIGA 2008 - onwards	\$214
Fog Light LH	GIGA 2008 - onwards	\$214
Headlight RH	FSR/FTR/FRR/FRD 2000 - onwards	\$315
Headlight LH	FSR/FTR/FRR/FRD 2000 - onwards	\$316
Headlight RH	NLR/NNR/NPR/NQR/NPS 2008 - onwards, FR*/FS*/FT*/FV* 2008 - onwards	\$212
Headlight LH	NLR/NNR/NPR/NQR/NPS 2008 - onwards, FR*/FS*/FT*/FV* 2008 - onwards	\$212



TURBOCHARGERS

Ensure your engine is operating at peak performance with a new genuine turbo.

NLR/NLS/NNR 4JJ1 Euro 4 10/07 - 08/10	\$2,259
NLR/NLS/NNR 4JJ1 Euro 5 09/10 - onwards	\$2,324
NPR/NPS/NQR 4HK1 10/07 - 05/16, FSS 10/07 - 05/16, FRR 4HK1 10/07 - 05/16	\$2,659
FRR/FSR/FT*/FV*/GV* 6HK1 10/07 - 10/15	\$3,488
FX*/GX* Euro 5 09/10 - onwards, FY* 12/12 - onwards	\$4,368
FX*/GX* 6UZ1 Euro 4 01/08 - 08/10	\$4,834

FRONT BUMPERS

NN*/NP*/NQ* without fog lamps 10/07 - onwards	\$385
NN*/NP*/NQ* with fog lamps 10/07 - onwards	\$386
FX* 10/07 - onwards, FY* 12/12 - onwards	\$577
FR*/FS* 10/07 - onwards	\$599





RADIATORS

Excellent coolant flow allowing for better heat dispersion and more consistent temperatures, ensuring your cooling system performs as intended.

NPS 10/07 - 08/10	\$1,324
NPR/NQR with 4HK1 Engine and Manual Transmission 07/2010-10/2014	\$1,338
NPR/NQR with 4HK1 Engine and AMT 11/2014 - onwards	\$1,550
NPR/NQR with 4HK1 Engine and Manual Transmission 11/2014 - onwards	\$1,557
FRR/FSR/FSS/FTR/FTS 04/96 - 04/00	\$1,898
FVD/FVL/FVM/FVR/FVY/FVZ/GVD/GVR 04/03 - 09/07	\$2,469

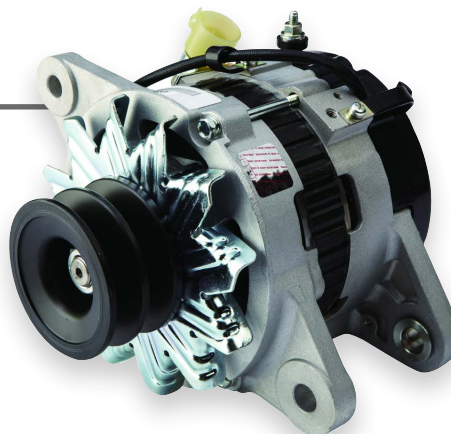


FRONT PANELS

NLR/NLS 2008 - onwards	\$370
NN*/NP*/NQ* 2008 - onwards	\$550
FR*/FS* 2008 - onwards	\$879
FT*/FV* 2008 - onwards, FX* 2008 - onwards, FY 2012 - onwards	\$941

BVP STARTER MOTORS & ALTERNATORS

Alternator	NK*/NP*/NQ* with 4HF1/4HG1 Engines 1994-96	\$543
Alternator	NK*/NP* 1993-1998	\$560
Starter Motor	FS*/FT*/FV* with 6BD1T/6BG1 Engines 1986-95	\$567
Starter Motor	NK*/NPS with 4HF1 Engine 1994-95	\$595
Starter Motor	FV*/GV* with 6SD1T Engine up to 01/2008	\$608



BVP FILTER KITS

4HE10T/4HF1/4HG1 ENGINES FOR NPS including SiTEC 110/115/120	\$25.95	6WF1/6WG1 (385/425) SiTEC 385/425 up to 29/02/2004	\$40.55
4HE-F-G1 EXC NPS. SiTEC 110/115/120	\$30.55	6HK1 SiTEC 190/220	\$40.70
4HE1 T SiTEC 130/140/145/170	\$33.55	6WF1/6WG1 (385/425) SiTEC 385/425 from 01/03/2004	\$42.50
4HK1 SiTEC 150/175	\$41.45	6HE1 NON TURBO SiTEC 230	\$49.15
		6HH1 SiTEC 175/200	\$49.15
		6SD1TC SiTEC 275	\$60.70
		6SD1TC SiTEC 270	\$63.10

PG PLATINUM® PREMIX COOLANT

- Organic lifetime propylene glycol premixed coolant with 6 years, 1.5 million kms, 36,000 hours service life. For use in all heavy duty, light duty and gas engines.
- Protects against liner pitting and provides solid corrosion protection for aluminium, cast iron, copper, brass, and solder.
- No SCA or extenders needed for life of the coolant.
- Easy maintenance with extended service non-chemical filters.
- Contains proprietary scale inhibitors.
- Compatible with gaskets, elastomers, non-metallics including silicon seals/hoses.
- OEM approved formulation free of nitrite, amine, phosphate, borate, silicate, and 2-ethylhexonic acid.
- Approved by Cummins to CES14603, CES14439 (for heavy duty) & CES 14636 (for light duty).
- Meets ASTM D3306, ASTM D6210 and TMC RP 330.



4L BOTTLE	\$24.30
10L DRUM	\$60.30
20L DRUM	\$119
208L DRUM	\$1,070
1000L IBC	\$5,024

PG PLATINUM® 4-WAY COOLANT TEST KIT

Easy to use test strips measure molybdate, nitrite, freeze point, and pH. Results in 45-75 seconds. Designed specifically for use with PG Platinum. 50 Strip Test Kit.

PG PLATINUM 4-WAY COOLANT TEST KIT

\$115



FLEETGUARD FILTERS AND FILTER KITS

MK12353	Caterpillar C12/C13/C15/C16 without FWS	\$34.45
MK11562	Detroit Series 60 (PRE-EGR)	\$47.65
MK12697	Caterpillar C13 with FWS	\$57.40
MK13571	Cummins ISC/ISL/ISLe5 without FWS	\$65.30
MK13983	Detroit Series 60 EGR DDEC VI	\$68.95
MK13034	Volvo D12D/D13A/D16C/D16/D12D/D11C/D13C/D9A	\$75.85
MK13429	Cummins ISX/Signature EGR without FWS	\$76.90
MK13979	Caterpillar C15/16 with FWS	\$83.85
MK13555	Cummins ISXe5/X15 without FWS	\$96.95
MK12992	Cummins ISX/Signature EGR with FWS	\$101
MK14266	Cummins ISXe5/X16 with FF Upgrade	\$120
MK13082	Cummins ISC/ISL/ISLe5 with FWS	\$121
MK13448	Cummins ISXe5/X16 with FWS	\$130

FF5488	Fuel Filter	\$15.95
FF2200	Fuel Filter	\$29.65
FF5776	Fuel Filter	\$49.65
FF5825NN	Fuel Filter Nano Net	\$68.75
FS1000	Fuel Water Separator	\$20.35
FS19729	Fuel Water Separator	\$20.40
FS19624	Fuel Water Separator	\$22.15
FS19764	Fuel Water Separator	\$28.55
FS1022	Fuel Water Separator	\$39.65
FS1003	Fuel Water Separator	\$59.50
FS1040	Fuel Water Separator	\$59.60
FS1007	Fuel Water Separator	\$61.70
LF9039	Lube Filter	\$49.35
LF9070	Lube Filter	\$54.70
LF14000NN	Lube Filter Nano Net	\$48.95



ISUZU CABLE KNIT BEANIE
\$9.65ea



ISUZU BADGE BEANIE
\$16.05ea



GREY CHECK BOSS UMBRELLA
\$48.70ea



WOMEN'S FLEECE HOODIE IN RED/CHARCOAL **\$56.40ea**



MEN'S FLEECE HOODIE IN BLACK/GREY **\$56.40ea**



MEN'S & WOMEN'S 2-IN-1 JACKET **\$157ea**

Apparel available in various sizes. Contact your local dealer for more information.

Merchandise



LED SIDE MARKER \$8ea

60.7×31mm • Chrome base
VX603A - Amber • VX603R - Red
VX603W - White • VX603AR - Amber/Red
60.7×31mm • Black base
VX603AB - Amber • VX603RB - Red
VX603WB - White • VX603ARB - Amber/Red



LED NUMBER PLATE LIGHT \$8ea

65.6×31mm • 3 Lights
VX602W - Chrome base



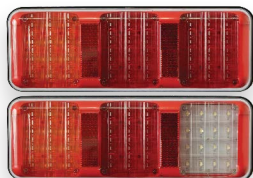
LED NUMBER PLATE LIGHT \$21.15ea

123.90×51.9mm • 12 LEDs
VX615W - Chrome base
VX615WB - Black base



LED WORK LIGHT FLOOD OR SPOT FROM \$34.65ea

1800 Lumens • 4"/100mm
18W • 9-32V • IP67
VX41800S (Spot) - \$34.65ea
VX41800F (Flood) - \$34.75ea



LED TAIL LIGHT FROM \$54.85ea

280x100x37mm
9-33V Hardware included
Waterproof Plug included
Amber/Red/Red - \$54.85ea
Amber/Red/White - \$58.50ea



LED COMBINATION WITH REFLECTORS \$80.45ea

296×94mm • Chrome base
VX617ARR - Amber/Red/Red
VX617ARW - Amber/Red/White
296×94mm • Black base
VX617ARRB - Amber/Red/Red
VX617ARWB - Amber/Red/White



LED HORIZONTAL COMBINATION \$88.45ea

428.3×96.8mm • 45 LEDs • Chrome base
VX605ARR - Amber/Red/Red
VX605ARW - Amber/Red/White



LARGE LED REAR COMBINATION LIGHT FROM \$151ea

602×131mm
VX707ARR2 - Amber/Red/Red - \$151ea
VX707ARW2 - Amber/Red/White - \$172ea

Lighting



DAYTIME RUNNING LIGHT KITS

Isuzu Daytime Running Lights (DRL) are a great option to give high visibility of your vehicle. All kits include integrated on/off switchable fog lamps.

FR*/FS* 10/07 - onwards **\$519**

N Series 10/07 - onwards
with factory fitted fog lamps **\$519**

N Series 10/07 - onwards
without factory fitted fog lamps **\$591**

WEATHERSHIELDS

Practical and stylish solution for open window driving.

Slim - CX*/EX* 10/07 - onwards **\$70.80**

LH - NL*/NN*/NP*/NQR/FR*/FS*/FT*/FV*/FX*
10/07 - onwards, FY* 12/12 - onwards **\$71.25**

RH - NL*/NN*/NP*/NQR/FR*/FS*/FT*/FV*/FX*
10/07 - onwards, FY* 12/12 - onwards **\$71.25**

LH - CX*/EX* 10/07 - onwards **\$79.45**

RH - CX*/EX* 10/07 - onwards **\$79.45**



CHROME GRILLES

NNR/NP*/NQR 10/07 - 05/15 **\$248**

NNR/NP*/NQR 06/15 - onwards **\$395**

FT*/FV* single cab 01/08 - 12/15 **\$745**

FR*/FS* 10/07 - 12/15 **\$750**

FT*/FV* 01/16 - onwards **\$911**

FX* 10/07 - 08/17, FY* 12/12 - 09/17 **\$938**

FR*/FS* 01/16 - onwards **\$1,175**

WHEEL SIMULATORS

Includes front and rear simulators, axle covers and lug nut covers. Great chrome-like finish. Resists rust and corrosion.

NQR 02/05 - onwards **\$343**

NPR 250/300/400 05/05-05/15,
NPR 45/65/75-190 06/15 - onwards **\$383**





MERITOR BRAKE SHOES

Contains two shoes and hardware kit for one wheel end. Shoe arc and dimensions engineered to OEM specifications. FF rated friction material. Anchor pins and rollers made from hardened steel.

KSMA2124707QP	Brake Shoe Kit MA212 Meritor Drive Q+	\$113
KSMA2124515Q	Brake Shoe Kit MA212 Meritor Drive/Trailer Q	\$118
KSMA2121308Q	Brake Shoe Kit MA212 Meritor Steer Q	\$123
KSMA2124514Q	Brake Shoe Kit MA212 Meritor Steer Q	\$123
KSMA3124707QP	Brake Shoe Kit MA312 Meritor Drive Q+	\$149
KSMA3124515Q	Brake Shoe Kit MA312 Meritor Drive/Trailer Q	\$159



EATON MEDIUM DUTY REMAN TRANSMISSIONS

RY08147	FS 8209 REMAN	\$7,917[†]
RY08152	FS 8209 REMAN	\$7,935[†]
RY08521	FS 8209 REMAN	\$7,874[†]

[†]Subject to Core Deposit. Contact your local Dealer for details.

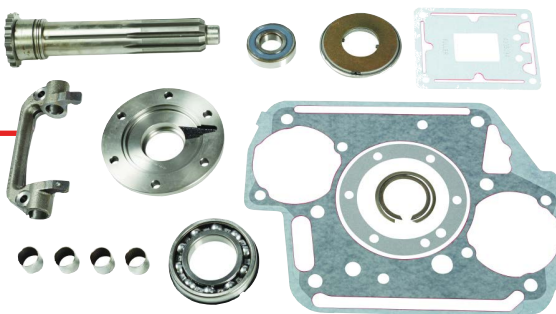
EATON CLUTCH KITS

308935589	Easy-Pedal Advantage Clutch	\$1,412
308935529	Easy-Pedal Advantage Clutch	\$1,447
308935271	Easy-Pedal Advantage Clutch	\$1,778
308935515	Easy-Pedal Advantage Clutch	\$1,845
308938556	Easy-Pedal Advantage Clutch	\$2,195
308938583	Easy-Pedal Advantage Clutch	\$2,229
309700529	Solo Advantage Clutch	\$1,632
309700515	Solo Advantage Clutch	\$2,095



EATON INSTALL KITS

K2468	Clutch Install Kit (RT) 10-Spline Shaft	\$323
K3768	Clutch Install Kit (RT) 14-Spline Shaft	\$361
K4125	Clutch Install Kit (RT) Hydraulic Release	\$440



GENUINE ISUZU REMANUFACTURED TRUCK ENGINES[†]

Remanufactured to a high standard by the Isuzu Japan factory using only genuine parts. Our competitively priced remanufactured engines are completely stripped down and inspected, and a significant number of components are replaced to ensure optimum performance. Covered by 12 months unlimited kilometre warranty.

NLR 09/10 - 05/15

With MYY manual transmission

\$12,819

NPR 09/10 - 05/15 4HK1-TCN

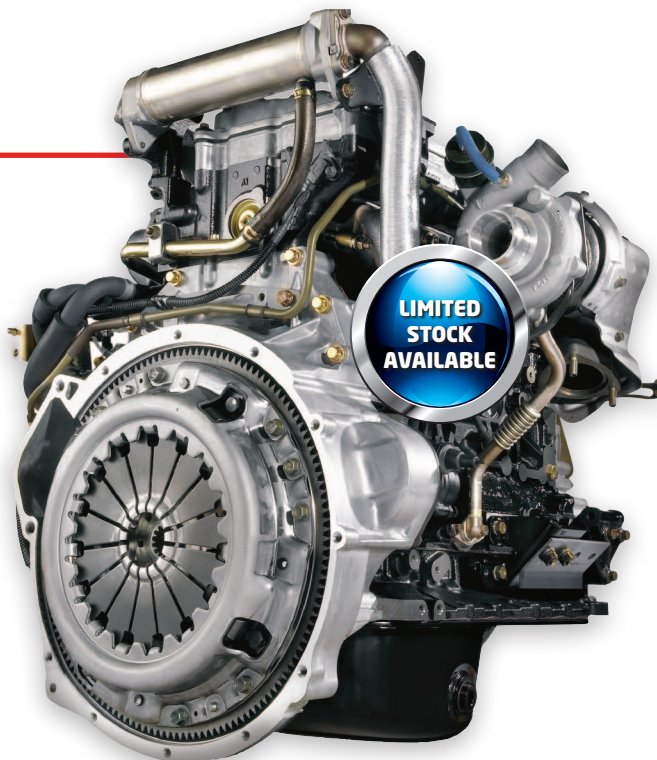
With MYY manual transmission

\$15,593

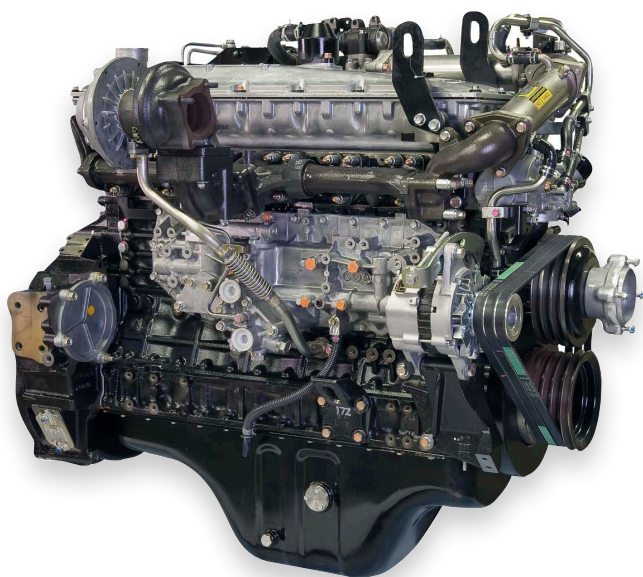
FX* 09/10 - 6UZ1-TCC 350HP

With ZF9S1310 transmission

\$34,123



[†]While Stocks Last. Subject to Core Deposit. Please contact your local Dealer for details.



ISUZU POWER SOLUTIONS

ISUZU JOEM REPOWERS

DIESEL ENGINE MODELS TO SUIT
THE FOLLOWING BRANDS:

- **HITACHI EXCAVATORS**
- **SUMITOMO EXCAVATORS**

AVAILABLE THROUGH ALL ISUZU APSO OUTLETS

OUR TRANSPORT INDUSTRY PARTNERS



VISIT **PARTS.ISUZU.COM.AU/FIND-A-DEALER** FOR YOUR CLOSEST DEALERSHIP

Prices published are recommended selling prices, include GST and are effective 1st July 2020 until 30th September 2020 or while stocks last. Images are for illustrative purposes only. All parts advertised have been included in good faith and on the basis that those parts will be available at participating Isuzu Dealerships at the time of publication. Isuzu and participating Dealers reserve the right to correct any errors made in parts listed and/or the pricing published.